

# CCH2000

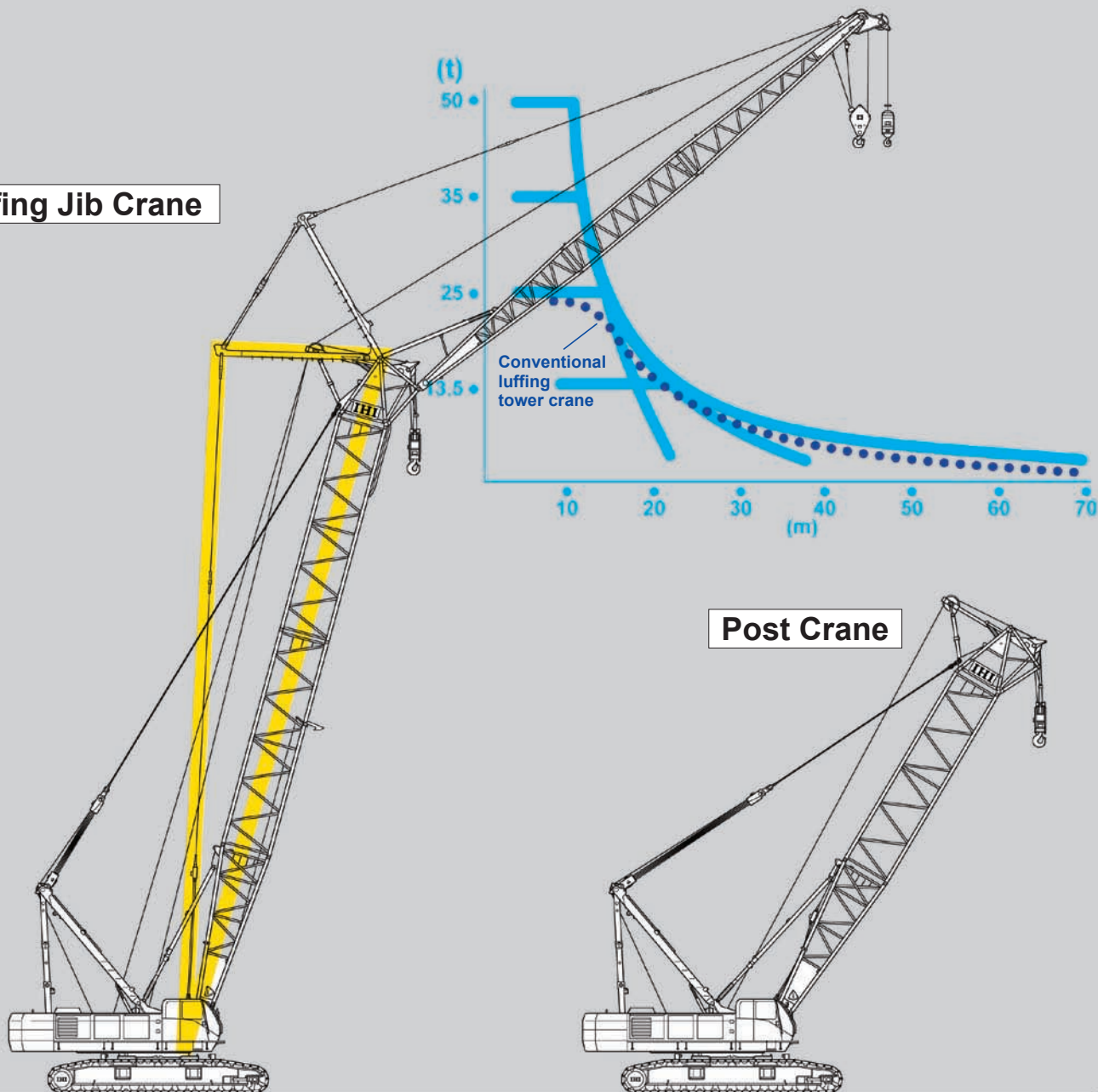
## Fully Hydraulic Crawler Crane

Lifting capacity 200 metric tons



# Luffing Jib Crane evolved to equip “Auxiliary Jib”

Luffing Jib Crane



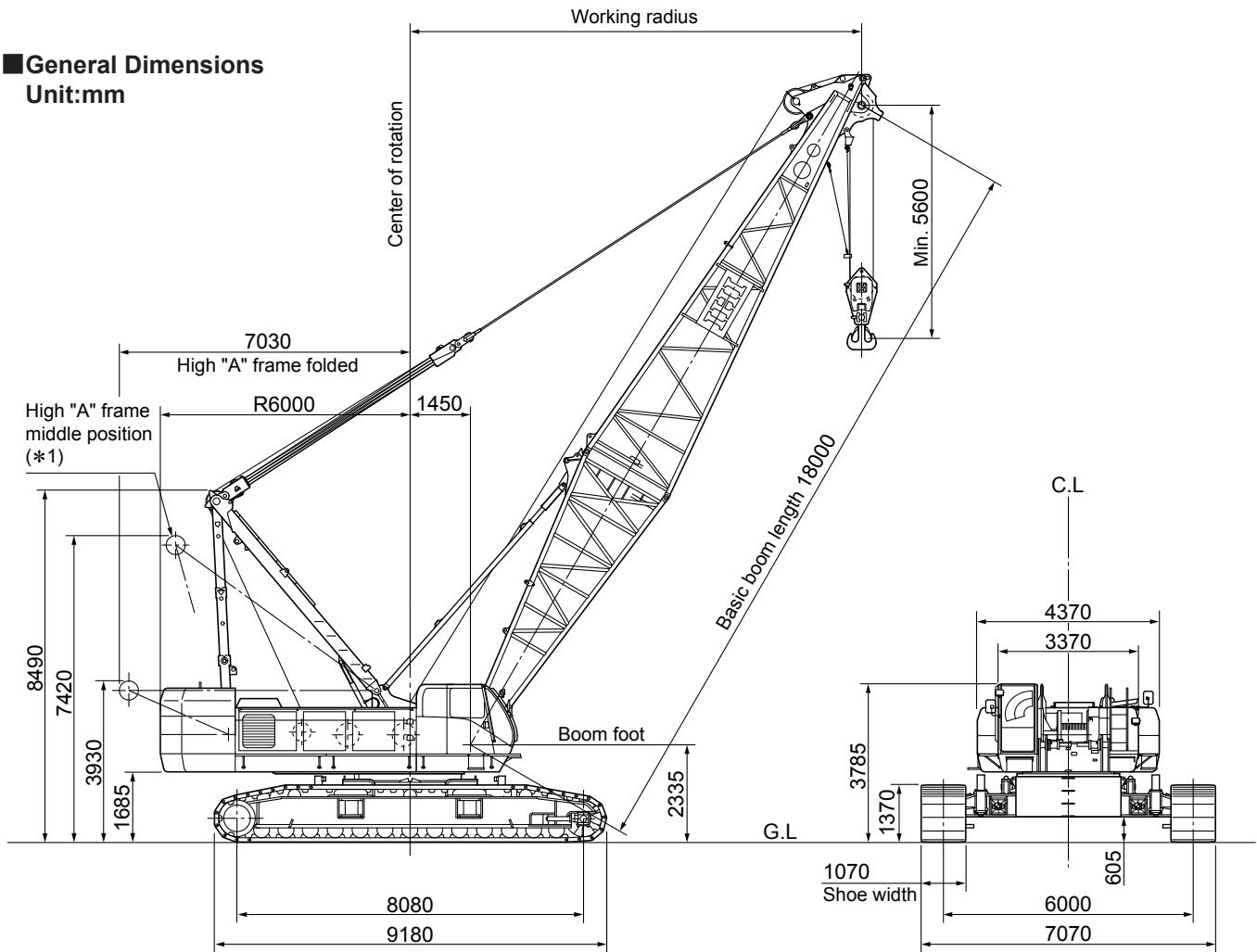
Post Crane

Selections are available from:  
1) 50-ton lifting with Post  
2) 25-ton lifting with Luffing Jib  
3) 13.5-ton lifting with Auxiliary Jib  
Simultaneous lifting by Post and Auxiliary Jib is not permitted.

Middle Equalizer for Luffing Jib lifting is tentatively stowed on inner post when the Luffing Jib is dismantled.

## General Dimensions

Unit:mm



## Specifications

Performance	
Swing speed	1.7min <sup>-1</sup> (1.7rpm) [Constant swing speed 0.6min <sup>-1</sup> (0.6rpm)---optional]
Travel speed	※0.9/0.6 km/h
Gradability	30% (16.7°)
Engine	
Make	HINO MOTOR
Model	K13C-UV (with turbo) Diesel engine
Type	4-cycle, water cooled, straight 6-cylinder, direct injection
Rated output	275kw/2000min <sup>-1</sup> (374PS/2000rpm)
Total piston displacement	12.882L
Fuel tank capacity	450L
Battery	DC12V x 150AH x 2pcs.
Main hoist system (Front left axle, also used for hoisting tower jib)	
Hydraulic motor	Variable displacement axial piston type
Reduction gear	Two-stage planetary gear
Hoist drum	Single drum driven independently by hydraulic motor, lebus grooved drum
Clutch	Internal expanding band type
Brake	External contracting band type
Drum lock	Ratchet lock
Aux. hoist system (Rear left axle)	
Hydraulic motor	Variable displacement axial piston type
Reduction gear	Two-stage planetary gear
Hoist drum	Single drum driven independently by hydraulic motor, lebus grooved drum
Clutch	Internal expanding band type
Brake	External contracting band type
Drum lock	Ratchet lock
Boom hoist system (Rear right axle, also used for hoisting tower post)	
Hydraulic motor	Variable displacement axial piston type
Reduction gear	Three-stage planetary gear
Hoist drum	Dual drums driven independently by hydraulic motor, lebus grooved drum
Brake	Wet type multi-disk
Drum lock	Ratchet lock

※The travel speed changes depending on the load.

## Standard equipment

- Engine tachometer (with hour meter)
- Hydraulic pressure gauge
- Fuel gauge
- Engine coolant temperature gauge
- Front work lamp (on both sides)
- Operator's room lamp
- Front windshield wiper (with window washer)
- Ceiling wiper (with window washer)
- Sun shade
- Sun-visor
- Storage pouch
- Tool storage
- Reclining operator's seat
- Floor mat
- Steps for operator's cab
- Radio (AM/FM, Cassette)
- Cigarette lighter
- Ashtray
- Rear view mirrors (on both sides)
- Warning horn
- Moment limiter
- Electric fuel pump
- Slewing flashing light
- Slewing warning Buzzer (with voice alarm)
- Travel warning Buzzer (with voice alarm)
- A-frame hoist cylinder
- Bronze tinted glass
- Wire mesh boom walkway (for inner boom)
- Foot rest
- Electrical engine throttle control grip
- Engine throttle pedal
- Ultra low speed control
- Automatic hydraulic assist brake (main and aux.)
- Winch mode selector (main and aux.)
- Rope guide roller on boom back (for outer boom)
- Plug socket (24V)
- Loud speaker
- Winch speed control system (main, aux. and boom hoist)
- Pump power-shift system
- Switch of emergency stop (front and rear)
- Boom foot pin cylinder
- Standard tools for maintenance (details are as per Parts Catalogue)
- Remote controller for jack and crawler expand cylinder

## Optional equipment

**(1) Base Machine**

- Jib drum
- Reeving winch
- Tagline
- Slewing parking break
- Constant speed slewing system
- Slewing mode select switch (free/break)
- Drum rotation indication
- Axle pin cylinder
- Monitor TV (for rear/drum view)
- Monitor TV (for hook load)
- Mirror for drum
- Radio transmitter
- Combustion type heater
- Fire extinguisher
- Room mirror
- Electric fan
- Spark arrester
- Operator gate lock lever
- Tool box (installed in front of operator cabin)
- Name plate (both side of base machine)
- Air conditioner

**(2) Light and Instrument**

- Yellow rotary light
- Airplane warning light
- Boom point clearance lamp
- Over load outside alarm light (red/yellow/green)
- Work light for drum
- Work light on boom
- Work light for rear direction
- Additional Front work light
- Hand light
- Lift/Depth meter
- Electric clinometer
- Level indicator
- Anemometer

**(3) Step and guard**

- Catwalk for rear cab
- Catwalk for rear cab (wide type with handrail)
- Handrail for catwalk
- Wire mesh for boom walkway (for insert boom and outer boom)
- Operator cabin roof guard
- Wire rope guard for insert boom
- Hook guard for outer boom (wood or steel pipe)
- Safety guard rope on main boom

**(4) Others**

- Large size tool box (with caster)
- Sling wire rope (for lifting counter weight or crawler)

## Specifications

Max. Lifting capacity x working radius	200metric tons x 5.0m	
Max. boom length	90m	
Max. boom length (main + jib)	103m(72m boom+31m jib)	
Rope speed	Main drum hoist/lowering	* 110~55/55~28m/min
	Aux. drum hoist/lowering	* 110~55/55~28m/min
	Boom drum hoist/lowering	* 32~14m/min x 2
Part line	Hook block capacity x Part line	200ton x 16
	Hook block capacity x Part line	13.5ton x 1
	Boom drum hoist	18
Counterweight	78ton	
Weight for body	16ton	
Total operating weight (with 18m boom)	193ton	
Average ground bearing pressure	103kPa(1.05kgf/cm <sup>2</sup> )	

\*The rope speed changes depending on the load.

## Combination of Boom and Jib (●: Available combination)

Jib length (m)	Boom length (m)												
	18	21	24	27	30	33	36	39	42	45	48	51	54
Auxiliary	●	●	●	●	●	●	●	●	●	●	●	●	●
13	●	●	●	●	●	●	●	●	●	●	●	●	●
19	●	●	●	●	●	●	●	●	●	●	●	●	●
25	●	●	●	●	●	●	●	●	●	●	●	●	●
31	●	●	●	●	●	●	●	●	●	●	●	●	●

Jib length (m)	Boom length (m)											
	57	60	63	66	69	72	75	78	81	84	87	90
Auxiliary	●	●	●	●	●	●	●	●	●	●	●	●
13	●	●	●	●	●	●	●	●	●	●	●	●
19	●	●	●	●	●	●	●	●	●	●	●	●
25	●	●	●	●	●	●	●	●	●	●	●	●
31	●	●	●	●	●	●	●	●	●	●	●	●

## Wire Rope

Place of use	Rope diameter (mm)	Guaranteed strength (ton)	Rope type
Main drum	φ 28	70.2	P•S(19)+39 x P7
Boom hoist	φ 22	36.3	IWRC6 x P•WS(31)
Boom suspension	φ 34	104.0	IWRC6 x P•WS(36)
Aux. drum	φ 28	70.2	P•S(19)+39 x P7
Jib suspension	φ 28	59.7	IWRC6 x Fi(29)
Jib strut suspension	φ 31.5	74.9	IWRC6 x Fi(29)

Note: Wire rope length to be determined according to the boom length.

## Crane boom composition

The following tables show standard combinations for each boom and jib length.

### Boom standard combination

Combination	Boom length (m)												
	18	21	24	27	30	33	36	39	42	45	48	51	54
7.5m inner	1	1	1	1	1	1	1	1	1	1	1	1	1
3.0m insert	—	1	2	1	2	1	1	2	1	1	2	1	1
6.0m insert	—	—	—	1	1	2	1	1	2	1	1	2	1
9.0m insert	—	—	—	—	—	—	1	1	1	2	2	2	3
10.5m outer	1	1	1	1	1	1	1	1	1	1	1	1	1

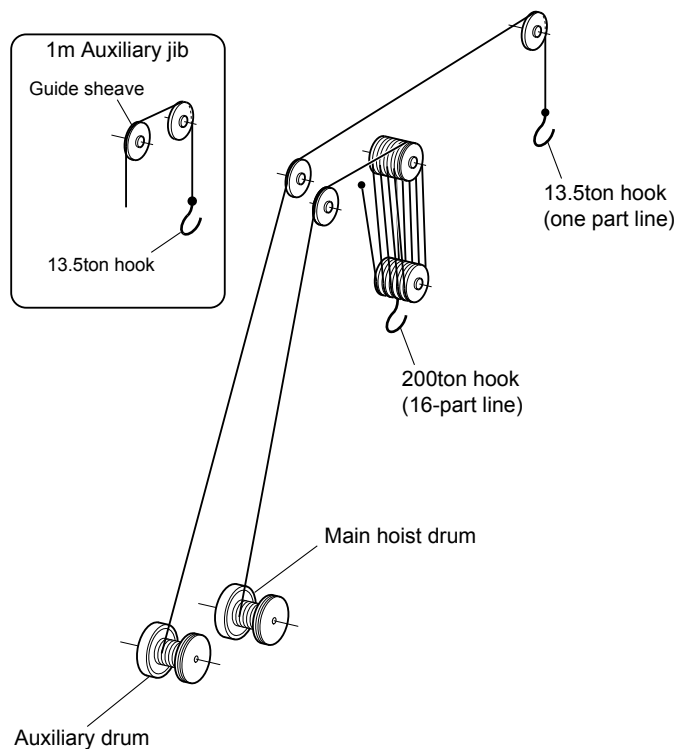
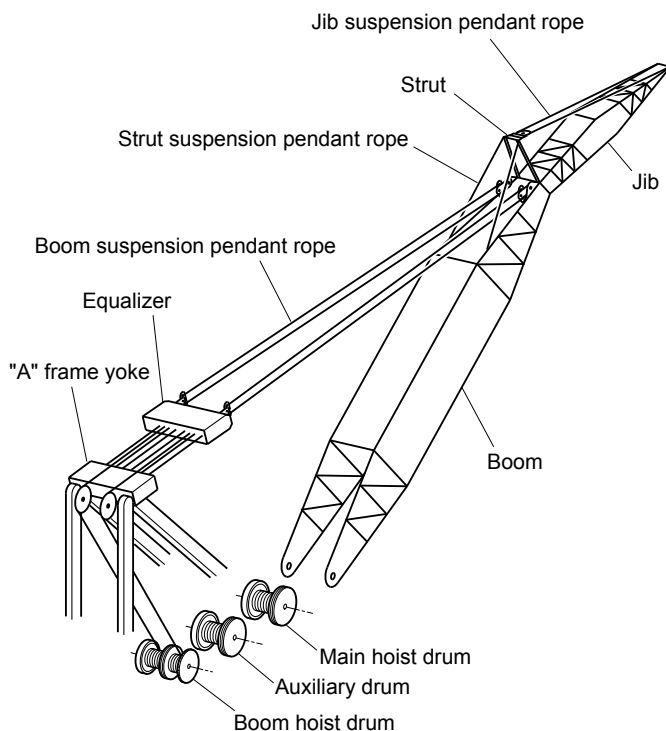
Combination	Boom length (m)											
	57	60	63	66	69	72	75	78	81	84	87	90
7.5m inner	1	1	1	1	1	1	1	1	1	1	1	1
3.0m insert	2	1	1	2	1	1	2	1	1	2	1	1
6.0m insert	1	2	1	1	2	1	1	2	1	1	2	1
9.0m insert	3	3	4	4	4	5	5	5	6	6	6	7
10.5m outer	1	1	1	1	1	1	1	1	1	1	1	1

Note: Installation of mast is required for boom length exceeding 69m.

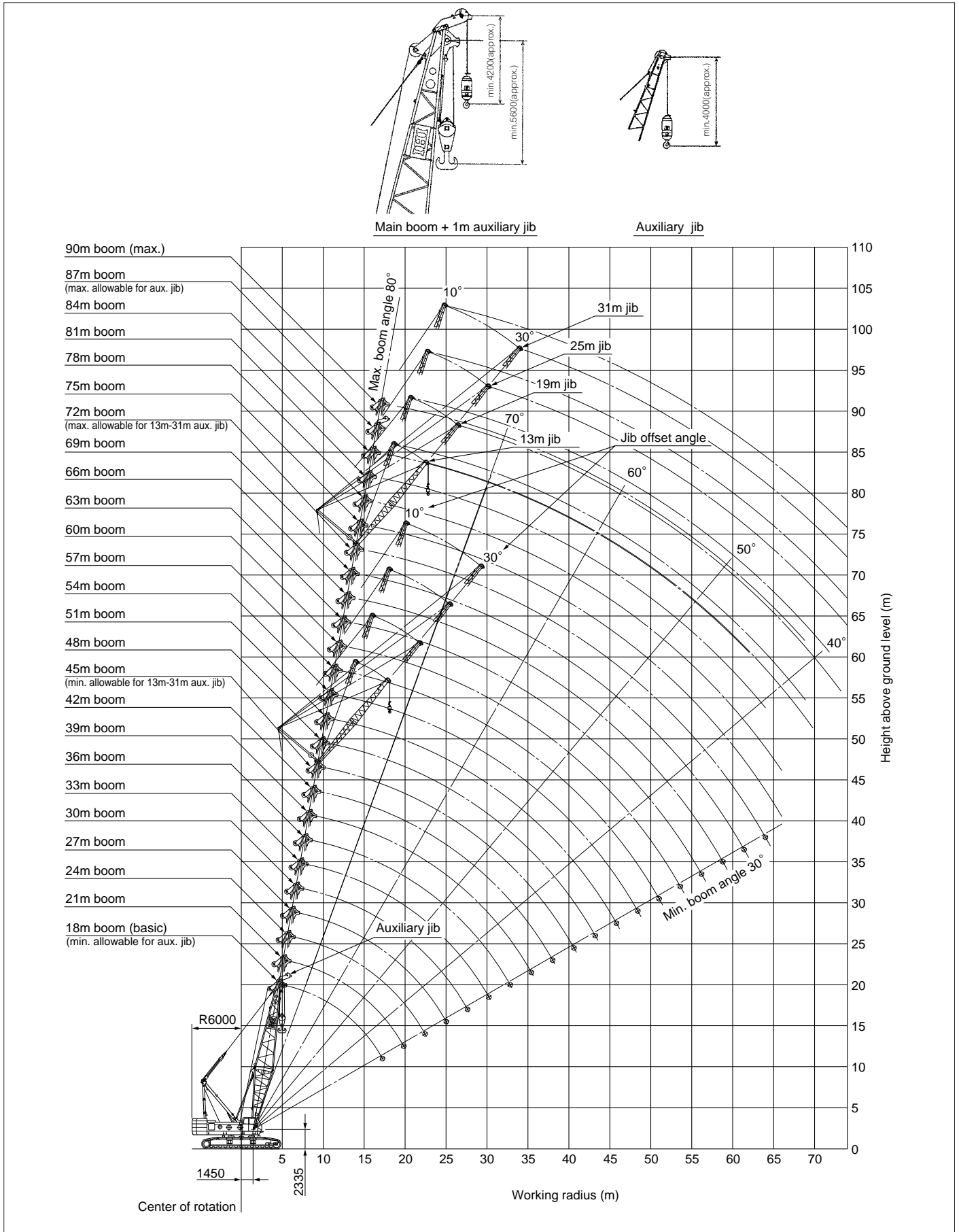
### Jib standard combination

Combination	Jib length (m)			
	13	19	25	31
6.5m inner	1	1	1	1
6.0m insert	—	1	2	3
6.5m outer	1	1	1	1

\*Contact IHI if other combinations required.



## Working range (No load condition)





## ■ Main boom rated lifting loads (78ton counterweight, 16ton weight for body)

(Unit: metric ton)

Boom length (m) Working radius (m)	18.0	21.0	24.0	27.0	30.0	33.0	36.0	39.0	42.0	45.0	48.0	51.0	54.0	57.0	60.0
5.0	5.0m x 200.0	5.6m x 165.0													
6.0	181.0	165.0	6.1m x 150.0	6.6m x 140.0											
7.0	161.9	154.3	146.7	139.1	7.2m x 130.0	7.7m x 118.0									
8.0	136.0	133.5	131.1	128.6	126.1	118.0	8.2m x 108.0	8.7m x 100.0							
9.0	116.6	115.6	114.6	113.6	112.6	108.5	104.4	100.0	9.2m x 94.0	9.8m x 89.0					
10.0	101.3	100.9	100.5	100.0	99.6	97.5	95.4	93.3	91.2	89.0	10.3m x 80.0	10.8m x 75.0	11.3m x 72.0	11.9m x 68.0	
12.0	78.7	78.6	78.5	78.3	78.2	77.5	76.7	76.0	75.2	74.5	72.8	71.1	69.3	67.6	12.4m x 62.0
14.0	62.0	61.8	61.5	61.3	61.0	60.9	60.8	60.7	60.6	60.5	60.1	59.7	59.3	58.9	58.5
16.0	51.0	50.9	50.8	50.6	50.5	50.4	50.3	50.2	50.1	50.0	49.9	49.8	49.7	49.6	49.5
18.0	17.2m x 46.4	43.3	43.2	43.0	42.9	42.8	42.7	42.7	42.6	42.5	42.4	42.3	42.2	42.1	42.0
20.0		19.8m x 38.4	37.8	37.6	37.5	37.4	37.3	37.1	37.0	36.9	36.8	36.7	36.6	36.5	36.4
22.0			33.4	33.1	32.7	32.6	32.5	32.4	32.3	32.2	32.1	32.0	31.8	31.7	31.6
24.0			22.4m x 32.7	29.5	29.2	29.1	29.0	28.9	28.8	28.7	28.6	28.5	28.3	28.2	28.1
26.0				25.0m x 28.0	26.4	26.3	26.2	26.0	25.9	25.8	25.7	25.5	25.4	25.2	25.1
28.0				27.6m x 24.5	23.9	23.7	23.6	23.4	23.3	23.1	23.0	22.8	22.7	22.5	
30.0					21.8	21.7	21.5	21.4	21.2	21.0	20.9	20.7	20.6	20.4	
32.0					30.2m x 21.7	19.9	19.7	19.6	19.5	19.3	19.1	19.0	18.8	18.6	
34.0						32.8m x 19.2	18.1	18.0	17.9	17.7	17.5	17.4	17.2	17.0	
36.0							35.4m x 17.1	16.6	16.5	16.3	16.1	16.0	15.8	15.6	
38.0								38.0m x 15.4	15.3	15.1	14.9	14.7	14.5	14.3	
40.0									14.3	14.1	13.9	13.6	13.4	13.2	
42.0									40.6m x 14.0	13.1	12.9	12.6	12.4	12.2	
44.0										43.2m x 12.5	11.9	11.7	11.5	11.3	
46.0											45.8m x 11.2	10.9	10.7	10.5	
48.0												10.2	10.0	9.8	
50.0												48.4m x 10.0	9.3	9.1	
52.0													51.0m x 8.9	8.4	
54.0														53.6m x 8.0	

Boom length (m) Working radius (m)	63.0	66.0	69.0	72.0	75.0	78.0	81.0	84.0	87.0	90.0
12.0	12.9m x 56.0	13.4m x 50.0	13.9m x 47.0							
14.0	54.2	48.1	47.0	14.5m x 42.0	15.0m x 37.5	15.5m x 34.0				
16.0	47.1	44.1	43.3	41.8	37.5	34.0	16.0m x 30.5	16.5m x 28.0	17.0m x 25.0	17.5m x 23.0
18.0	41.2	40.2	40.1	38.0	35.6	33.3	30.5	27.0	25.0	22.6
20.0	36.3	35.9	35.7	35.6	33.4	30.4	28.5	25.7	23.5	20.6
22.0	31.5	31.4	31.3	31.2	31.1	28.5	26.4	24.5	21.8	19.0
24.0	28.0	27.8	27.7	27.6	27.5	27.3	25.0	22.7	20.3	18.0
26.0	25.0	24.8	24.5	24.3	24.0	23.8	23.5	21.2	19.1	16.8
28.0	22.4	22.2	22.0	21.9	21.8	21.6	21.5	19.8	17.8	15.6
30.0	20.3	20.1	19.9	19.8	19.7	19.6	19.5	18.6	16.7	14.5
32.0	18.4	18.2	18.0	17.9	17.8	17.7	17.6	17.5	15.7	13.6
34.0	16.8	16.6	16.4	16.3	16.2	16.1	16.0	15.8	14.7	12.8
36.0	15.4	15.2	15.0	14.9	14.8	14.6	14.5	14.3	13.9	12.0
38.0	14.1	13.9	13.7	13.6	13.5	13.4	13.3	13.0	12.8	11.3
40.0	13.0	12.8	12.6	12.5	12.4	12.3	12.2	11.9	11.7	10.6
42.0	12.0	11.8	11.6	11.5	11.4	11.3	11.2	10.8	10.6	10.1
44.0	11.1	10.9	10.7	10.6	10.5	10.4	10.3	9.8	9.6	9.2
46.0	10.3	10.1	9.9	9.8	9.7	9.5	9.4	8.9	8.6	8.3
48.0	9.6	9.4	9.1	8.9	8.8	8.6	8.4	8.0	7.8	7.4
50.0	8.9	8.7	8.5	8.4	8.2	8.1	7.9	7.4	7.0	6.7
52.0	8.3	8.1	7.8	7.7	7.5	7.4	7.2	6.8	6.3	6.0
54.0	7.7	7.5	7.3	7.2	7.0	6.9	6.7	6.2	5.7	5.4
56.0	7.2	7.0	6.8	6.6	6.5	6.3	6.1	5.7	5.2	4.8
58.0	56.2m x 7.1	6.5	6.3	6.1	6.0	5.8	5.6	5.2	4.6	4.2
60.0		58.8m x 6.3	5.8	5.6	5.5	5.3	5.1	4.7	4.2	3.6
62.0			61.4m x 5.5	5.2	5.0	4.8	4.6	4.3	3.6	3.1
64.0				64.0m x 4.8	4.6	4.4	4.2	3.8	3.2	2.7
66.0					4.2	4.0	3.8	3.4	2.7	2.3
68.0					66.2m x 4.0	3.2	3.0	2.5	2.3	2.0
70.0							2.5	2.0		

### Notes

- Above rated loads are based on the machine being operated on firm level ground, within 78% of tipping load at any point of 360° around the machine with forward stability factor of over 1.15.
- Working radius is horizontal distance from center of rotation to a vertical line through the center of gravity of the load.
- The weight of the slings, hook block(s) and auxiliary lifting devices must be considered to be a part of the load.  
Hook block weight:  
200ton hook block...2.70ton 150ton hook block...2.40ton  
100ton hook block...1.40ton 60ton hook block...1.20ton  
50ton hook block...1.00ton 30ton hook block...1.00ton  
13.5ton hook block...0.60ton
- Jib boom can be fitted to main boom in the following combinations.
 

Jib length(m)	Auxiliary	13.0	19.0	25.0	31.0
Boom length(m)	18.0~87.0	45.0~72.0	45.0~72.0	45.0~72.0	45.0~72.0
- When jib boom is fitted actual loads that can be lifted with main hook block should be reduced according to the below table (the weights include auxiliary hook block).
 

Jib length(m)	Auxiliary	13.0	19.0	25.0	31.0
Weight to be deducted(ton)	0.8	3.5	4.0	4.9	6.0
- High "A" Frame should be extended before working.  
Extend the "A" frame to the highest position when there is no mast.  
Extend the "A" frame to the mid-position when there is a mast.
- Depending on the number of part lines, rated lifting load is limited as follows:
 

1Part line...up to 13.5ton	2Part line...up to 25.0ton
3Part line...up to 37.5ton	4Part line...up to 50.0ton
5Part line...up to 62.5ton	6Part line...up to 75.0ton
7Part line...up to 87.5ton	8Part line...up to 100.0ton
9Part line...up to 112.5ton	10Part line...up to 125.0ton
11Part line...up to 137.5ton	12Part line...up to 150.0ton
13Part line...up to 162.5ton	14Part line...up to 175.0ton
15Part line...up to 187.5ton	16Part line...up to 200.0ton
- Always use a mast for boom length of 69m or over. Carefully follow the instruction manual concerning installation of pendant rope.
- Rated loads shown in bold lines are based on structural strength factors.

## ■ 1m aux. jib rated lifting loads (78ton counterweight, 16ton weight for body)

(Unit: metric ton)

Boom length (m) Working radius (m)	18.0	21.0	24.0	27.0	30.0	33.0	36.0	39.0	42.0	45.0	48.0	51.0	54.0	57.0	60.0
5.0	5.9m x 13.5														
6.0	13.5	6.4m x 13.5													
7.0	13.5	13.5	7.0m x 13.5	7.5m x 13.5											
8.0	13.5	13.5	13.5	13.5	8.0m x 13.5	8.5m x 13.5									
9.0	13.5	13.5	13.5	13.5	13.5	13.5	9.0m x 13.5	9.6m x 13.5							
10.0	13.5	13.5	13.5	13.5	13.5	13.5	13.5	13.5	10.1m x 13.5	10.5m x 13.5	11.1m x 13.5	11.6m x 13.5			
12.0	13.5	13.5	13.5	13.5	13.5	13.5	13.5	13.5	13.5	13.5	13.5	13.5	12.2m x 13.5	12.7m x 13.5	13.2m x 13.5
14.0	13.5	13.5	13.5	13.5	13.5	13.5	13.5	13.5	13.5	13.5	13.5	13.5	13.5	13.5	13.5
16.0	13.5	13.5	13.5	13.5	13.5	13.5	13.5	13.5	13.5	13.5	13.5	13.5	13.5	13.5	13.5
18.0	13.5	13.5	13.5	13.5	13.5	13.5	13.5	13.5	13.5	13.5	13.5	13.5	13.5	13.5	13.5
20.0	18.8m x 13.5	13.5	13.5	13.5	13.5	13.5	13.5	13.5	13.5	13.5	13.5	13.5	13.5	13.5	13.5
22.0		21.4m x 13.5	13.5	13.5	13.5	13.5	13.5	13.5	13.5	13.5	13.5	13.5	13.5	13.5	13.5
24.0			24.0m x 13.5	13.5	13.5	13.5	13.5	13.5	13.5	13.5	13.5	13.5	13.5	13.5	13.5
26.0				13.5	13.5	13.5	13.5	13.5	13.5	13.5	13.5	13.5	13.5	13.5	13.5
28.0				26.6m x 13.5	13.5	13.5	13.5	13.5	13.5	13.5	13.5	13.5	13.5	13.5	13.5
30.0					29.2m x 13.5	13.5	13.5	13.5	13.5	13.5	13.5	13.5	13.5	13.5	13.5
32.0						31.7m x 13.5	13.5	13.5	13.5	13.5	13.5	13.5	13.5	13.5	13.5
34.0							13.5	13.5	13.5	13.5	13.5	13.5	13.5	13.5	13.5
36.0							34.3m x 13.5	13.5	13.5	13.5	13.5	13.5	13.5	13.5	13.5
38.0								36.9m x 13.5	13.5	13.5	13.5	13.5	13.5	13.5	13.5
40.0									39.5m x 13.5	13.5	13.3	13.1	12.8	12.6	12.4
42.0										12.5	12.3	12.1	11.8	11.6	11.4
44.0										42.1m x 12.5	11.3	11.1	10.9	10.7	10.5
46.0											44.7m x 11.0	10.3	10.1	9.9	9.7
48.0												47.3m x 9.8	9.4	9.2	9.0
50.0													49.9m x 8.7	8.5	8.3
52.0														7.8	7.6
54.0														52.5m x 7.7	7.0
56.0															55.1m x 6.8

Boom length (m) Working radius (m)	63.0	66.0	69.0	72.0	75.0	78.0	81.0	84.0	87.0
12.0	13.7m x 13.5								
14.0	13.5	14.2m x 13.5	14.8m x 13.5	15.3m x 13.5	15.8m x 13.5				
16.0	13.5	13.5	13.5	13.5	13.5	16.3m x 13.5	16.9m x 13.5	17.4m x 13.5	17.9m x 13.5
18.0	13.5	13.5	13.5	13.5	13.5	13.5	13.5	13.5	13.5
20.0	13.5	13.5	13.5	13.5	13.5	13.5	13.5	13.5	13.5
22.0	13.5	13.5	13.5	13.5	13.5	13.5	13.5	13.5	13.5
24.0	13.5	13.5	13.5	13.5	13.5	13.5	13.5	13.5	13.5
26.0	13.5	13.5	13.5	13.5	13.5	13.5	13.5	13.5	13.5
28.0	13.5	13.5	13.5	13.5	13.5	13.5	13.5	13.5	13.5
30.0	13.5	13.5	13.5	13.5	13.5	13.5	13.5	13.5	13.5
32.0	13.5	13.5	13.5	13.5	13.5	13.5	13.5	13.5	13.5
34.0	13.5	13.5	13.5	13.5	13.5	13.5	13.5	13.5	13.5
36.0	13.5	13.5	13.5	13.5	13.5	13.5	13.5	13.5	13.1
38.0	13.3	13.1	12.9	12.8	12.7	12.6	12.5	12.2	12.0
40.0	12.2	12.0	11.8	11.7	11.6	11.5	11.4	11.1	10.9
42.0	11.2	11.0	10.8	10.7	10.6	10.5	10.4	10.0	9.8
44.0	10.3	10.1	9.9	9.8	9.7	9.6	9.5	9.0	8.8
46.0	9.5	9.3	9.1	9.0	8.9	8.7	8.6	8.1	7.8
48.0	8.8	8.6	8.3	8.1	8.0	7.8	7.6	7.2	7.0
50.0	8.1	7.9	7.7	7.6	7.4	7.3	7.1	6.6	6.2
52.0	7.5	7.3	7.0	6.9	6.7	6.6	6.4	6.0	5.5
54.0	6.9	6.7	6.5	6.4	6.2	6.1	5.9	5.4	4.9
56.0	6.4	6.2	6.0	5.8	5.7	5.5	5.3	4.9	4.4
58.0	57.7m x 5.9	5.7	5.5	5.3	5.2	5.0	4.8	4.4	3.8
60.0		5.1	5.0	4.8	4.7	4.5	4.3	3.9	3.4
62.0		60.3m x 9.0	4.6	4.4	4.2	4.0	3.8	3.5	2.8
64.0			62.9m x 4.4	4.0	3.8	3.6	3.4	3.0	2.4
66.0				65.5m x 3.6	3.4	3.2	3.0	2.6	
68.0						2.4	2.2		

### Notes

- Above rated loads are based on the machine being operated on firm level ground, within 78% of tipping load at any point of 360° around the machine with forward stability factor of over 1.15.
- Working radius is horizontal distance from center of rotation to a vertical line through the center of gravity of the load.
- When the main hook block is installed, the lifting loads of jib must be reduced by the weight of hook block (main and jib) and other lifting devices.  
 200ton hook block...2.70ton  
 150ton hook block...2.40ton  
 100ton hook block...1.40ton  
 60ton hook block...1.20ton  
 50ton hook block...1.00ton  
 30ton hook block...1.00ton  
 13.5ton hook block...0.60ton
- Boom lengths for auxiliary jib attachment are 18.0m-87.0m.
- Always extend the "A" frame during operation.
- Use the 1m auxiliary jib for crane operations only. Do not use for bucket operations.
- Rated loads for the 1m auxiliary jib are based on structural strength.

### Aux. jib rated lifting loads (78ton counterweight, 16ton weight for body)

(Unit:metric ton)

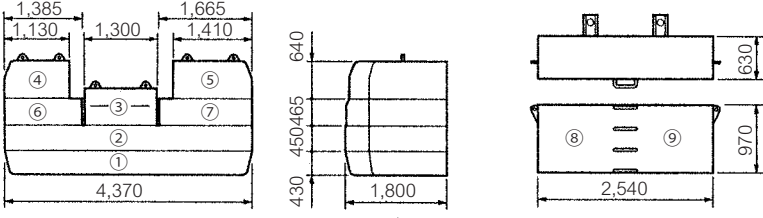
Boom length (m)	45.0								48.0								51.0									
Jib length (m)	13.0		19.0		25.0		31.0		13.0		19.0		25.0		31.0		13.0		19.0		25.0		31.0			
Offset angle																										
Working radius (m)	10°	30°	10°	30°	10°	30°	10°	30°	10°	30°	10°	30°	10°	30°	10°	30°	10°	30°	10°	30°	10°	30°	10°	30°		
14.0	14.1mx 13.5		15.5mx 12.0							14.6mx 13.5							15.1mx 13.5									
16.0	13.5		12.0							13.5		16mx 12.0					13.5		16.6mx 12.0							
18.0	13.5	18mx 13.0	12.0		18.2mx 8.0		19.7mx 3.5		13.5	18.5mx 13.0	12.0		18.7mx 8.0				13.5	19mx 13.0	12.0		19.2mx 8.0					
20.0	13.5	13.0	12.0	21.3mx 8.0	8.0		3.5		13.5	13.0	12.0	21.8mx 8.0	8.0		20.2mx 3.5		13.5	13.0	12.0		8.0		20.7mx 3.5			
22.0	13.5	13.0	12.0	8.0	8.0			3.5	13.5	13.0	12.0	8.0	8.0			3.5	13.5	13.0	12.0		22.4mx 8.0	8.0		3.5		
24.0	13.5	13.0	12.0	8.0	8.0	25.7mx 6.0		3.5	13.5	13.0	12.0	8.0	8.0			3.5	13.5	13.0	12.0	8.0	8.0			3.5		
26.0	13.5	13.0	12.0	8.0	8.0	6.0	3.5		13.5	13.0	12.0	8.0	8.0	26.2mx 6.0	3.5		13.5	13.0	12.0	8.0	8.0	26.7mx 6.0		3.5		
28.0	13.5	13.0	12.0	8.0	8.0	6.0	3.5	29mx 3.0	13.5	13.0	12.0	8.0	8.0	6.0	3.5	29.6mx 3.0	13.5	13.0	12.0	8.0	8.0	6.0	3.5			
30.0	13.5	13.0	12.0	8.0	8.0	6.0	3.5	3.0	13.5	13.0	12.0	8.0	8.0	6.0	3.5	3.0	13.5	13.0	12.0	8.0	8.0	6.0	3.5	30.1mx 3.0		
32.0	13.5	13.0	12.0	8.0	8.0	6.0	3.5	3.0	13.5	13.0	12.0	8.0	8.0	6.0	3.5	3.0	13.5	13.0	12.0	8.0	8.0	6.0	3.5	3.0		
34.0	13.5	13.0	12.0	8.0	8.0	6.0	3.5	3.0	13.5	13.0	12.0	8.0	8.0	6.0	3.5	3.0	13.5	13.0	12.0	8.0	8.0	6.0	3.5	3.0		
36.0	13.5	13.0	12.0	8.0	8.0	6.0	3.5	3.0	13.5	13.0	12.0	8.0	8.0	6.0	3.5	3.0	13.5	13.0	12.0	8.0	8.0	6.0	3.5	3.0		
38.0	13.5	13.0	12.0	8.0	8.0	6.0	3.5	3.0	13.5	13.0	12.0	8.0	8.0	6.0	3.5	3.0	13.5	13.0	12.0	8.0	8.0	6.0	3.5	3.0		
40.0	13.5	13.0	12.0	8.0	8.0	6.0	3.5	3.0	13.5	13.0	12.0	8.0	8.0	6.0	3.5	3.0	13.5	13.0	12.0	8.0	8.0	6.0	3.5	3.0		
42.0	13.3	13.0	12.0	8.0	8.0	6.0	3.5	3.0	13.1	13.0	12.0	8.0	8.0	6.0	3.5	3.0	12.9	12.9	12.0	8.0	8.0	6.0	3.5	3.0		
44.0	12.3	12.3	12.0	8.0	8.0	6.0	3.5	3.0	12.1	12.1	12.0	8.0	8.0	6.0	3.5	3.0	11.9	11.9	11.9	8.0	8.0	6.0	3.5	3.0		
46.0	11.5	11.5	11.5	8.0	8.0	6.0	3.5	3.0	11.3	11.3	11.3	8.0	8.0	6.0	3.5	3.0	11.1	11.1	11.1	8.0	8.0	6.0	3.5	3.0		
48.0	10.7	10.7	10.7	8.0	8.0	6.0	3.5	3.0	10.5	10.5	10.5	8.0	8.0	6.0	3.5	3.0	10.3	10.3	10.3	8.0	8.0	6.0	3.5	3.0		
50.0	10.0	10.0	10.0	8.0	8.0	6.0	3.5	3.0	9.8	9.8	9.8	8.0	8.0	6.0	3.5	3.0	9.6	9.6	9.6	8.0	8.0	6.0	3.5	3.0		
52.0	9.3	9.3	9.3	8.0	8.0	6.0	3.5	3.0	9.1	9.1	9.1	8.0	8.0	6.0	3.5	3.0	9.0	9.0	9.0	8.0	8.0	6.0	3.5	3.0		
54.0	53.3mx 8.9	8.7	8.7	8.0	8.0	6.0	3.5	3.0	8.5	8.5	8.5	8.0	8.0	6.0	3.5	3.0	8.4	8.4	8.4	8.0	8.0	6.0	3.5	3.0		
56.0		54.2mx 8.7	8.2	8.0	8.0	6.0	3.5	3.0	59.9mx 8.1	8.0	8.0	8.0	8.0	6.0	3.5	3.0	7.9	7.9	7.9	7.9	7.9	6.0	3.5	3.0		
58.0			7.7	7.7	7.7	6.0	3.5	3.0	56.8mx 7.8	7.5	7.5	7.5	6.0	3.5	3.0	7.4	7.4	7.4	7.4	7.4	6.0	3.5	3.0			
60.0			58.8mx 7.5	7.2	7.2	6.0	3.5	3.0	60mx 3.5	60mx 3.0			7.0	7.0	7.0	6.0	3.5	3.0	58.5mx 7.2	59.4mx 7.0	6.8	6.8	6.8	6.0	3.5	3.0
62.0			60.2mx 7.2	6.7	6.0					61.4mx 6.7	6.5	6.5	6.0	6.0			62mx 3.0	62mx 3.0			6.3	6.3	6.3	6.0	3.5	3.0
64.0				64mx 6.3	64mx 6.0							62.8mx 6.3	64mx 6.1	64mx 6.0						64mx 5.9	5.9	5.9	5.9	64mx 3.5	64mx 3.0	
66.0																					65.4mx 5.6	66mx 5.5	66mx 5.5			

Boom length (m)	54.0								57.0								
Jib length (m)	13.0		19.0		25.0		31.0		13.0		19.0		25.0		31.0		
Offset angle																	
Working radius (m)	10°	30°	10°	30°	10°	30°	10°	30°	10°	30°	10°	30°	10°	30°	10°	30°	
14.0	15.6mx 13.5																
16.0	13.5		17.1mx 12.0						16.1mx 13.5		17.6mx 12.0						
18.0	13.5	19.5mx 13.0	12.0		19.8mx 8.0				13.5		12.0						
20.0	13.5	13.0	12.0		8.0		21.3mx 3.5		13.5	20mx 13.0	12.0		20.3mx 8.0		21.8mx 3.5		
22.0	13.5	13.0	12.0	22.9mx 8.0	8.0		3.5		13.5	13.0	12.0	23.4mx 8.0	8.0		3.5		
24.0	13.5	13.0	12.0	8.0	8.0			3.5	13.5	13.0	12.0	8.0	8.0		3.5		
26.0	13.5	13.0	12.0	8.0	8.0	27.2mx 6.0		3.5	13.5	13.0	12.0	8.0	8.0	27.7mx 6.0	3.5		
28.0	13.5	13.0	12.0	8.0	8.0	6.0	3.5		13.5	13.0	12.0	8.0	8.0	6.0	3.5		
30.0	13.5	13.0	12.0	8.0	8.0	6.0	3.5	30.6mx 3.0	13.5	13.0	12.0	8.0	8.0	6.0	3.5	31.1mx 3.0	
32.0	13.5	13.0	12.0	8.0	8.0	6.0	3.5	3.0	13.5	13.0	12.0	8.0	8.0	6.0	3.5	3.0	
34.0	13.5	13.0	12.0	8.0	8.0	6.0	3.5	3.0	13.5	13.0	12.0	8.0	8.0	6.0	3.5	3.0	
36.0	13.5	13.0	12.0	8.0	8.0	6.0	3.5	3.0	13.5	13.0	12.0	8.0	8.0	6.0	3.5	3.0	
38.0	13.5	13.0	12.0	8.0	8.0	6.0	3.5	3.0	13.5	13.0	12.0	8.0	8.0	6.0	3.5	3.0	
40.0	13.5	13.0	12.0	8.0	8.0	6.0	3.5	3.0	13.4	13.0	12.0	8.0	8.0	6.0	3.5	3.0	
42.0	12.6	12.6	12.0	8.0	8.0	6.0	3.5	3.0	12.4	12.4	12.0	8.0	8.0	6.0	3.5	3.0	
44.0	11.7	11.7	11.7	8.0	8.0	6.0	3.5	3.0	11.5	11.5	11.5	8.0	8.0	6.0	3.5	3.0	
46.0	10.9	10.9	10.9	8.0	8.0	6.0	3.5	3.0	10.7	10.7	10.7	8.0	8.0	6.0	3.5	3.0	
48.0	10.2	10.2	10.2	8.0	8.0	6.0	3.5	3.0	10.0	10.0	10.0	8.0	8.0	6.0	3.5	3.0	
50.0	9.5	9.5	9.5	8.0	8.0	6.0	3.5	3.0	9.3	9.3	9.3	8.0	8.0	6.0	3.5	3.0	
52.0	8.8	8.8	8.8	8.0	8.0	6.0	3.5	3.0	8.6	8.6	8.6	8.0	8.0	6.0	3.5	3.0	
54.0	8.2	8.2	8.2	8.0	8.0	6.0	3.5	3.0	8.0	8.0	8.0	8.0	8.0	6.0	3.5	3.0	
56.0	7.7	7.7	7.7	7.7	7.7	6.0	3.5	3.0	7.5	7.5	7.5	7.5	7.5	6.0	3.5	3.0	
58.0	7.2	7.2	7.2	7.2	7.2	6.0	3.5	3.0	7.0	7.0	7.0	7.0	7.0	6.0	3.5	3.0	
60.0	6.6	6.6	6.6	6.6	6.6	6.0	3.5	3.0	6.5	6.5	6.5	6.5	6.5	6.0	3.5	3.0	
62.0	61.1mx 6.4	62mx 6.1	6.1	6.1	6.1	6.0	3.5	3.0	6.0	6.0	6.0	6.0	6.0	6.0	3.5	3.0	
64.0			5.7	5.7	5.7	5.7	3.5	3.0	63.7mx 5.6	5.5	5.5	5.5	5.5	5.5	5.5	3.5	3.0
66.0			5.3	5.3	5.3	5.3	68mx 3.5	66mx 3.0	64.6mx 5.4	5.0	5.0	5.0	5.0	5.0	66mx 3.5	66mx 3.0	
68.0			66.6mx 5.1	68mx 4.9	68mx 4.9	68mx 4.9				4.6	4.6	4.6	4.6				
70.0									69.2mx 4.4	4.3		70mx 4.3					
72.0										70.6mx 4.2							





## Individual masses and outline dimensions

	Main part name	Mass (tons)	Q'ty	Dimensions(m) L x W x H																						
Main body	Main body (without "A" frame, ropes, axles and crawlers)	(31.9)	(1)	7.95 x 3.37 x 3.17																						
	Main body (with "A" frame, and without ropes, axles and crawlers)	(36.2)	(1)	9.60 x 3.37 x 3.32																						
	Main body (with "A" frame, ropes, and axles and without crawlers)	47.3	1	10.17 x 3.37 x 3.33																						
	Crawler	18.9	2	9.18 x 1.07 x 1.37																						
	Counterweight, weight for body	94.0	9	See below.																						
	Counterweight arrangement and dimensions (mm)		 <table border="1" data-bbox="1134 383 1337 638"> <thead> <tr> <th colspan="2">Weight (tons)</th> </tr> </thead> <tbody> <tr> <td>①</td> <td>18.5</td> </tr> <tr> <td>②</td> <td>18.6</td> </tr> <tr> <td>③</td> <td>9.8</td> </tr> <tr> <td>④</td> <td>7.5</td> </tr> <tr> <td>⑤</td> <td>9.6</td> </tr> <tr> <td>⑥</td> <td>6.2</td> </tr> <tr> <td>⑦</td> <td>7.8</td> </tr> <tr> <td>⑧</td> <td>8.0</td> </tr> <tr> <td>⑨</td> <td>8.0</td> </tr> <tr> <td>Total</td> <td>94.0</td> </tr> </tbody> </table>			Weight (tons)		①	18.5	②	18.6	③	9.8	④	7.5	⑤	9.6	⑥	6.2	⑦	7.8	⑧	8.0	⑨	8.0	Total
Weight (tons)																										
①	18.5																									
②	18.6																									
③	9.8																									
④	7.5																									
⑤	9.6																									
⑥	6.2																									
⑦	7.8																									
⑧	8.0																									
⑨	8.0																									
Total	94.0																									
Crane attachment	Inner boom (with boom limit stop)	3.1	1	7.75 x 2.65 x 2.4																						
	Outer boom (with pendant rope)	3.4	1	11.3 x 2.45 x 2.35																						
	3m insert boom (with pendant rope)	0.85	As required	3.15 x 2.45 x 2.35																						
	6m insert boom (with pendant rope)	1.35	As required	6.15 x 2.45 x 2.35																						
	9m insert boom (with pendant rope)	1.8	As required	9.15 x 2.45 x 2.35																						
	Equalizer	0.8	1	2.27 x 1.14 x 0.36																						
	Inner jib (with jib strut pendant rope)	1.1	1	6.95 x 1.35 x 1.05																						
	Outer jib (with pendant rope)	0.5	1	6.85 x 1.07 x 1.05																						
	1m aux. jib	0.35	1	1.99 x 0.64 x 0.4																						
	6m insert jib (with pendant rope)	0.25	As required	6.1 x 0.98 x 1.05																						
	200ton hook	2.7	1	0.85 x 2.36 x 1.01																						
	150ton hook	2.4	1	0.85 x 2.21 x 0.82																						
	100ton hook	1.4	1	0.73 x 1.97 x 0.54																						
	60ton hook	1.2	1	0.8 x 1.77 x 0.5																						
13.5ton hook (shared with luffing jib)	0.6	1	0.46 x 1.52 x 0.46																							
Luffing attachment	Inner post (with inner post yoke and stabilizer)	5.3	1	7.75 x 2.65 x 2.4																						
	Tower top	2.9	1	4.86 x 3.02 x 2.35																						
	3m insert post (shared with 3m insert boom)	0.95	As required	3.15 x 2.45 x 2.35																						
	6m insert post (shared with 6m insert boom)	1.50	As required	6.15 x 2.45 x 2.35																						
	9m insert post (shared with 9m insert boom)	2.10	As required	9.15 x 2.45 x 2.35																						
	Middle equalizer	0.3	1	1.21 x 0.76 x 0.33																						
	Strut	2.5	set	7.42 x 2.07 x 1.15																						
	Tower inner jib (with jib limit stop)	1.82	1	9.15 x 2.57 x 1.5																						
	Tower outer jib (with pendant rope)	1.1	1	9.4 x 2.1 x 1.61																						
	3m tower insert jib (with pendant rope)	0.32	As required	3.1 x 1.6 x 1.5																						
	6m tower insert jib (with pendant rope)	0.54	As required	6.1 x 1.6 x 1.5																						
	9m tower insert jib (with pendant rope)	0.74	As required	9.1 x 1.6 x 1.5																						
	50ton hook (for post operations)	1.0	1	0.8 x 1.9 x 0.43																						
25ton hook (shared with post and jib operations)	1.0	1	0.8 x 1.61 x 0.35																							

◆ Diagrams shown have been drawn for catalog purposes and may differ from actual products.

◆ Specifications are subject to change without notice due to technical improvements or modifications.